

SWINDON TOWN

FOOTBALL CLUB



Division 3

1974 - 1975

Official Programme 10p



PLYMOUTH ARGYLE

HARRIS

and
YOU...



...a mutual benefit match

Why not sign on for the team which produces the famous HARRIS Sausages, Pies, Bacon & Canned Foods, and you too could enjoy the following benefits

- A variety of working hours, both full-time and part-time, for men and women
- Subsidised transport from Swindon and many other local areas
- Good, clean working conditions
- The security of Europe's biggest meat group behind you
- Plus much more

To find out more about the vacancies we have and how to get on to 'the transfer list' to HARRIS' please contact our Personnel Officer by letter or telephone — we shall be pleased to answer all your questions

The Personnel Officer C & T HARRIS (CALNE) LTD., Calne, Wilts. SN11 0JL
Telephone CALNE 812261 ext 3222 or 3174



© Swindon Town
Football Company Limited 1972

Swindon Town Football Company Limited

Registered Office County Ground Swindon

President **W. J. Castle**

Vice-Presidents **J. Davies, F. Plyer, H. Williams**

Directors Chairman **C. J. Green**

Vice-Chairman **C. Cowley**

Directors **W. Billingham, H. Cowley, C. Day**

A. W. Done, M. Earle, R. Fricker,

T. J. Kearsley H. E. Lane

General Manager **R. A. Morse**

Secretary **R. J. Jefferies**

Team Manager **D. T. Williams**

Commercial Manager **G. Drew**

Club Medical Officer **Dr. J. Nicholas**

NEWS & VIEWS NEWS & VIEWS NEWS & VIEWS NEWS & VIEWS

So once again, we meet old friends, dating back to the Southern League Fixtures, and the early seasons in the Third Division (South). We can still recall the great names, who wore the dark green shirts with black collars and cuffs. Moses Russell, a great full back, David Jack (later with the Arsenal) and Jack Cock, one of the finest centre forwards to play for England.

Most of the encounters between the two clubs have been in Division 3, but Plymouth has spent long spells in Division 2, the last of which ended in 1968. We played only four games in Division 2 against Plymouth. In 1963-64, Swindon won both games, 2 - 1 and 4 - 2, but in 1964-65, we lost at Plymouth 1 - 2 and 2 - 3 at home. The latter game played in March saw Swindon, most unlucky to lose and go four places lower in the League Table and eventually to relegation.

The last time the two clubs met was in season 1968-69. Swindon won the first encounter at home by 3 goals to nil, but lost at Plymouth 1 - 2. Nevertheless we gained promotion to Division 2 at the end of the season. Just the reverse to season 1964-65.

We, in Swindon, have always looked upon Plymouth Argyle, as a fine club, capable of fielding a very strong team, and the magnificent ground at Home Park, with its fine new stand has one of the best playing surfaces in the country.

Unfortunately during the past few seasons Plymouth has gone through a difficult period. Last season saw a resurgence of interest by their run in the League Cup, but despite this form, their league position was not very high.

We feel Plymouth will soon regain some of its past glories and become a power in the football world.

As for ourselves, it is always a pleasure to visit Plymouth, with its glorious open spaces and the view from the Hoe, in addition to its lovely mild climate, but even that seems to have been spoiled this September by gales and rough seas. The welcome we receive at Home Park is always a warm and hospitable one, we trust our visitors to the County Ground this afternoon will have the same feelings for Swindon.

The result at Crystal Palace no doubt shocked most of our supporters. Frankly

continued on page 9

ARGYLE BELIEVE IN SKILL

by Tony Pullein

One of the men who has done so much to kill the old image that the Third Division was a battle-ground for crunchers and runners is Plymouth Argyle manager Tony Waiters, a former England goalkeeper who is now one of the game's top coaches. Since taking over at Home Park, Mr. Waiters has aimed at producing a team which plays attractive and entertaining football.

His methods were given a big boost last season when Argyle crushed Second Division Portsmouth (4-0) and then scored successive away wins over First Division clubs Burnley (2-1), Queen's Park Rangers (3-0) and Birmingham (2-1) in the League Cup. Argyle even held the highly-talented Manchester City to 1-1 at home in the semi-final before going down 0-2 in the replay.

Unfortunately, Argyle didn't achieve any real success in the League and, in an effort to improve things here, Mr. Waiters made several new summer signings.

All departments of the team have been strengthened. Ian Pearson, a prolific scorer with Goole Town in the Northern Premier League, joined Argyle during the summer and was named substitute in early games. A schoolteacher, Ian has recently accepted an appointment in Devon and now hopes to continue combining soccer with teaching.

Pearson joins established strikers Steve Davey and Paul Mariner, last season's top scorers with 20 and 17 respectively, and Bill Rafferty, a £25,000 signing from Blackpool towards the end of last season. Rafferty previously played for Coventry. Last weekend he hit his first ever league hat trick in the 4-1 win over Tranmere.

Mr. Waiters paid Queen's Park Rangers £30,000 for midfield man John Delve. Though he had made only occasional appearances in the Rangers' side - - due to

the consistency of such players as Terry Venables and Gerry Francis - - Delve is a player of outstanding potential.

Delve is expected to play alongside the veteran Harry Burrows and Argyle's longest-serving player John Hore. Burrows, a former England under-23 player, began his League career with Aston Villa in 1960. Stoke signed him in 1965 and he was a regular first-teamer there for eight years. Argyle signed him last season. Hore, a local discovery, made the first of his 350-odd League appearances for the club in 1965.

The back four may include three close-season arrivals. The dual centre-backs have been Clive Griffiths and Mike Green, the new team-captain. Griffiths is on loan from Manchester United, for whom he made seven First Division appearances last season. Green arrived from Bristol Rovers on a £20,000 transfer after missing only two matches in their Third Division promotion campaign last season. Green began with Carlisle and then spent three seasons with Gillingham before joining Bristol Rovers in 1971.

Phil Burrows had been a York City ever present for five successive seasons until his transfer this summer broke the sequence. Manchester City was his first club but he didn't get into their first-team.

The right-back is likely to be Peter Darke who won the spot when Colin Randall was injured last season and played so well he has retained the position. Randall had been signed from Coventry during the 1973 close-season.

Few goalkeepers can claim more extensive experience than Jim Furnell who was a First Division player with Burnley in 1959/60. He later became a big favourite at Liverpool and Arsenal before leaving

the big time in 1968 for Rotherham. He has been Argyle's 'keeper for the past four years.

Argyle did not make a very auspicious start to this season, collecting only two points from their first three League games. They lost at Preston (0-1) and Southend (1-2) but, in between, they defeated Grimsby 2-1 at Home Park.

After their fine League Cup run last season, Argyle's interest this term came to a sudden end in the first round. They drew 0-0 away to Bristol Rovers, but lost their home replay 0-1.

Manager Tony Waiters is the former England goalkeeper who spent his best playing days with Blackpool. He played 257 League games for Blackpool before accepting a coaching job at Liverpool.

Three years after retiring, he joined Burnley, also in a coaching capacity. But he couldn't resist the urge to play again and, within weeks, he was in Burnley's League team, there to remain for a year.

Eventually, he reverted to coaching duties until being offered his present job.

Plymouth Argyle became founder members of Division Three (South) in 1920 and in one exasperating spell they had the galling experience of finishing second - - thus missing promotion - - for a record breaking six seasons in succession between 1922 and 1927.

Following their six successive near-misses, Argyle eventually won promotion to Division 11 in 1930 and remained there until 1950. Two years later they regained their place, only to forfeit it again in 1956. Their last promotion success came in 1959 the first season of the re-organised national Third Division.

It was in 1968 that they suffered their last relegation.

The club almost folded after the last war when their Home Park stadium was wrecked by enemy bombs. A local bus was driven onto the ground for use as dressing rooms and directors' box! Now Home Park is once again one of the best grounds in the South.

Being rather remote from most of their rivals in the Football League, Plymouth are making strenuous efforts to point out the advantages they can offer players who join them.

"When meeting a prospective new player, I usually motor up to Bristol to meet him," says Mr. Waiters. "Otherwise, it can seem such an awfully long way down to Plymouth and this tends to put a lot of players off."

"In the car I can take his mind off the journey and also show him some of the best West Country Scenery. Being with a club off the beaten track, I find it necessary to do these things."

Cecil Green

Artistic Decorations in all its branches

12 Armstrong Street
Swindon Wilts
Telephone 4593

Maylott Studios

Martin Davison Ltd.

For Group and Sports Photographs
Official Photographers to
Swindon Town Football Club

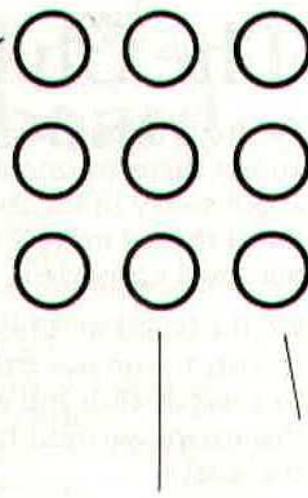
31 Faringdon Road
Telephone 22792



Frank Burrows in action

Third Division Scene

by Tony Pullein



Bobby Charlton's effect as a player has transformed the Preston side and, on current form, they are hot promotion favourites. Even so Charlton Athletic, under new manager Andy Nelson, are the surprise form team in Division Three in this season's first ratings tables.

The accompanying chart gives an at-a-glance indication of each club's current form. It is based upon the last three home results, and last three away games, of each of the 24 clubs up to last Saturday.

Crystal Palace's 6-2 victory over us at Selhurst Park sent them rocketing up the charts. Their feat in netting five goals in the space of 13 minutes is one of the best sequences in League history though it has on seven occasions been beaten, notably by Preston N.E. in 1887 when they scored six in one seven-minute spell against Hyde in the F.A. Cup. Preston, however, maintained their pressure and eventually won 26-0.

Newly-promoted Gillingham are finding the going pretty tough in Division Three, as can be seen in the following chart.

	HOME					AWAY					
	P	W	D	L	F A	P	W	D	L	F A	Pts
Charlton	6	3	0	0	7 0	2	1	0	5	2	11
Preston	6	3	0	0	7 2	2	0	1	6	4	10
Southend	6	3	0	0	8 1	1	1	1	1	2	9
Blackburn	6	2	0	1	5 4	2	0	1	4	3	8
Peterborough	6	3	0	0	6 2	1	0	2	3	5	8
Crystal Palace	6	3	0	0	13 4	0	1	2	2	5	7
Bournemouth	6	1	2	0	3 1	1	1	1	3	3	7
Colchester	6	2	1	0	3 1	0	2	1	4	5	7
Halifax	6	2	1	0	7 4	0	2	1	3	7	7
Huddersfield	6	2	0	1	7 4	1	0	2	2	2	6
Port Vale	6	2	1	0	7 4	0	1	2	2	6	6
Watford	6	1	2	0	6 5	1	0	2	3	8	6
Chesterfield	6	2	1	0	7 2	0	0	3	3	6	5
Plymouth	6	2	0	1	6 3	0	1	2	1	3	5
Walsall	6	1	2	0	4 2	0	1	2	5	7	5
Wrexham	6	1	1	1	6 5	1	0	2	4	6	5
Tranmere	6	2	0	1	4 1	0	1	2	2	6	5
Hereford	6	1	1	1	3 2	1	0	2	2	5	5
Bury	6	1	1	1	3 2	1	0	2	3	6	5
Grimsby	6	1	1	1	6 4	0	1	2	2	6	4
Brighton	6	1	1	1	6 6	0	1	2	0	3	4
Swindon	6	1	1	1	2 1	0	1	2	5	12	4
Aldershot	6	2	0	1	6 5	0	0	3	0	7	4
Gillingham	6	0	2	1	3 4	0	1	2	3	5	3

Make Someone's Date

We are pleased to accept record requests from our Supporters to be played before each match. Do you know someone whose birthday it is, a friend or relation celebrating a wedding anniversary or new

addition to the family. Why not give them that extra treat by playing a record just for them. Drop a line to the D.J. here at the County Ground and we will do the rest.

The Chairmans Column

Far from being a pessimist and goodness knows there are enough of these people about today in the football world, I feel that I should make a few facts known to our loyal supporters.

We, the board of directors, know just what it costs to run our club on the lines fitting to a league club and we also know that this means we must have support through the gates.

It quite rightly is said that unless we can produce the results on the field, then we can't expect the people to support us. We are well aware of this and we have pledged ourselves through Danny to do our very best to achieve this end.

To achieve this means spending money, but there is obviously a limit even to this, when our income remains so low. We are hoping that our gates will improve as the season progresses, but unless they do, we shall be forced to economise. On our present gates of five thousand we are losing approximately fifteen hundred pounds a week, and obviously this cannot be allowed to continue for long.

What are we going to do about it? You may well ask. We have to attack this problem from two sides. Firstly, we have to cut down on any and every unnecessary expenditure and secondly, and this is of course very important, increase our income, which we derive outside of the gate charges.

To increase our income from other sources than from the gates, means a lot of hard work to be put in both from the commercial side and from the voluntary help that we receive.

As you will now know, our catering on the ground, although being carried out professionally is being run directly by ourselves and Mr. Done and Mr. Fricker who spend a lot of time on this, are hoping that these services will be appreciated by our supporters and all the profits are going directly to the club. General opinion at the moment seems to be that

the services this season are much improved, but if there are any suggestions that you wish to make on this subject, I know the directors concerned will be only too pleased to hear from you.

Our Commercial Manager, Mr. Graham Drew will be the first one to which we shall turn for renewed efforts on our behalf and I know that he and his team of workers will make every effort to achieve greater results.

Graham has many new ideas which he will be introducing soon and one of these is connected with holidays which I know will appeal to most of us.

There must be many people in and around the district who would not only like to help the club, but at the same time earn some money for themselves by helping to sell our competition tickets. This can so easily be achieved.

But now something quite different.

The club would like to congratulate, and to wish them well in their studies, the following four young members of the staff of Gatemen and Stewards who will soon be attending University.

Andrew Saunders who is returning to the University of Wales to continue reading Pharmacy.

Nick Harding to Jesus College, Cambridge, to read History.

Paul Crowley to the London School of Economics to read Accountancy, and Keith Miller to Loughborough University to read Mathematics and Education.

All of them will be welcome to the County Ground during vacation.

The Stewards who do a great job for us very often under difficult circumstances are a body of people who get very little limelight in the club activities and under the guidance of Bill Harris, have successfully coped with these duties over the years and their loyalty is very much appreciated.

it was not what it seemed. Granted Swindon played badly, very badly indeed in the first half, gave away goals, whilst others should have been prevented. Nevertheless the Palace had an inspired spell, and everything came off for them. A bad mistake in the penalty area gave Palace the chance to score the first goal. Then it was the home supporters got right behind them, and roared them on. This wonderful support created an atmosphere which lifted the players.

Despite the fact that this club has come from Division 1 to Division 11 in two seasons, there is magnificent support, both in numbers and vocal encouragement. Mind you, I imagine they also let the players know when they are not playing well, as was evident in the second half when Swindon then held their own.

Whilst disappointing to us, from a spectators point of view this was a grand game to watch, fast open football with emphasis on attack, eight goals, no incidents, no deliberate fouls. There were three bookings but only for minor offences. (I agree discipline must be maintained but thought the booking of John Trollope very hard after what to me was perfect tackle).

The man in the middle

ALAN PORTER (Bolton).

Worked his way through to The League list after serving in local leagues, the Bolton Combination and Lancashire Combination and five seasons on The League line. Married, he is a head teacher and was a linesman for Fairs Cup Matches in 1969 and 1970. He is a qualified F.A. coach and an international table tennis referee who has taken charge of 16 internationals.

Key of the board

- A Birmingham v Derby
- B Burnley v Leeds
- C Chelsea v Arsenal
- D Everton v Wolverhampton
- E Leicester v Q.P.Rangers
- F Luton v Ipswich
- G Manchester City v Liverpool
- H Newcastle v Carlisle
- I Sheffield United v Middlesbrough
- J Stoke v Coventry
- K Tottenham H. v West Ham United

- L Bolton v Sheffield Wed.
- M Bristol Rovers v Aston Villa
- N Cardiff v Bristol City
- O Millwall v Oxford United
- P Norwich v Notts Co.
- Q Nottingham Forest v Hull City
- R Oldham v Blackpool
- S Orient v Fulham
- T Southampton v Portsmouth
- A West Brom. Alb. v Manch. United
- B York City v Sunderland

- C Brighton v Watford
- D Colchester v Charlton
- E Gillingham v Aldershot
- F Grimsby v Peterborough
- G Halifax v Bury
- H Hereford v Bournemouth
- I Huddersfield v Chesterfield
- J Preston N.E. v Blackburn
- K Wrexham v Walsall

- L Bradford City v Chester
- M Brentford v Cambridge United
- N Darlington v Scunthorpe
- O Hartlepool v Rotherham
- P Lincoln v Northampton
- Q Mansfield v Crewe
- R Reading v Newport
- S Shrewsbury v Swansea
- T Workington v Southport

**For High Class Central Heating, Plumbing
Painting and Decorating**

Electrical Installations and repairs

NORTH WILTS

Sanitary and Heating Co. Ltd.

NEWPORT ST., SWINDON

Telephone 5373/4

Danny's Desk



Once again a very disappointing result at Crystal Palace where four out of the six goals scored by Palace were as the result of errors by members of our own team. We had plenty of chances, and when a team scores 2 goals away from home they are usually assured of at least one point, but not of course, when goals are given away.

Colin Prophett has joined us from Sheffield Wednesday, and it was at that Club that I first met Colin, and in fact brought him into the first team. He has lost his place at Norwich and has come to Swindon for a trial period of one month to see if he fits in with the scheme of things here, and to quicken play up at the back.

Our injury problem is again mounting, and I cannot emphasis the word 'problem' because that is what it certainly is. The fluid on Jimmy Allan's elbow is disappearing, but he is unable to straighten his arm, and a further Xray is to be taken. Glyn Broom is still receiving treatment for his injured knee and is likely to be out a further two weeks. Kenny Stroud is awaiting surgery, and will not be available until after Christmas. Geoff Chalklin has a sore knee which is responding to treatment. Andy Young has back trouble and is to see a specialist, and Michael Hooman has an ankle injury - emergency ward 10 indeed.

In conclusion I would ask you all to look out for a forthcoming schoolboy penalty kicking competition, more of which I will tell you about later.



Presentation at Westlecot Home for the Blind

SWINDON MODEL CENTRE

(J R Korda)

2 CIVIC CENTRE THEATRE WAY
SWINDON - Telephone 26878



The SHOP with the STOCK

SPECIALISTS IN RADIO CONTROL AIRCRAFT

Largest selection of Plastic and
Wood Kits in SWINDON

★★ MAIL ORDER ★★

DIVISION 3

DATE	OPPONENTS	RESULT	
		H	A
1974			
Aug. 17	Bury	H	0
20	League Cup 1		
	Portsmouth	H	0
24	Port Vale	A	2
31	Blackburn Rovers	H	2
Sept. 3	Tranmere Rovers	H	0
7	Crystal Palace	A	2
11	League Cup 2		
14	Plymouth Argyle	H	
17	Aldershot	H	
21	Charlton Athletic	A	
24	Walsall	A	
28	Watford	H	
Oct. Oct.	Chesterfield	A	
5	Southend United	H	
9	League Cup 3	A	
12	Halifax Town	A	
19	Wrexham	H	
21	Tranmere Rovers	A	
26	Huddersfield Town	A	
Nov. 2	Grimsby Town	H	
5	Chesterfield	H	
9	Brighton & Hove Albion	A	
13	League Cup 4		
16	Gillingham	H	
23	F.A. Cup 1		
30	Colchester United	H	
Dec 4	League Cup 5		
7	Hereford United	A	
14	F.A. Cup 2		
21	Peterborough United	H	
26	Plymouth Argyle	A	
28	AFC Bournemouth	H	
1975			
Jan. 4	Aldershot (3)	A	
11	Hereford United	H	
15	League Cup SF		
18	Colchester United	A	
22	League Cup SF		
25	Preston North End	A	
Feb. 1	Brighton & Hove A.	H	
8	Grimsby Town	A	
15	Preston North End (5)	H	
22	Gillingham	A	
Mar. 1	Blackburn Rovers (LCF)	A	
8	Walsall (6)	H	
15	Watford	A	
18	Bury	A	
22	Crystal Palace	H	
28			
29	Peterborough United	A	
31	AFC Bournemouth	A	
Apr. 1	Charlton Athletic	H	
5	Huddersfield Town (SF)	H	

DATE	OPPONENTS	RESULT	
		H	A
5	Huddersfield Town (SF)	H	
11	Southend United	A	
19	Halifax Town	H	
22	Port Vale	H	
26	Wrexham	A	
May 3	F.A. Cup Final		

FOOTBALL COMBINATION

DATE	OPPONENTS	RESULT	
		H	A
1974			
Aug. 17	Ipswich Town	A	0
20	Bristol Rovers	A	5
24	Oxford United	H	0
27	Bristol Rovers	H	0
31	Arsenal	A	0
Sept. 7	Q.P.R.	H	0
14	West Ham United	A	3
18	Oxford United	A	
21	Crystal Palace	H	
28	Bournemouth	A	
Oct. 9	Reading	A	
12	Cardiff City	H	
19	Chelsea	A	
22	Southampton	H	
26	Swansea City	H	
Nov. 2	Bristol City	A	
9	Tottenham Hotspur	H	
16	Luton Town	A	
23(1)	Norwich City	H	
30	Birmingham City	A	
Dec. 7	Leicester City	H	
14(2)	Ipswich Town	H	
17	Fulham	A	
28	Swansea City	A	
Jan. 1	Plymouth Argyle	H	
1975			
4 (3)			
11	Leicester City	A	
18	Birmingham City	H	
25 (4)	West Ham United	H	
Feb. 1	Tottenham Hotspur	A	
8	Luton Town	H	
15(5)	Norwich City	A	
22	Bristol City	H	
26	Crystal Palace	A	
Mar. 1	Arsenal	H	
8(6)	Q.P.R.	A	
15	Fulham	H	
29	Bournemouth	H	
31	Plymouth Argyle	A	
Apr. 7	Cardiff City (SF)	A	
12	Reading	H	
22	Southampton	A	
26	Chelsea	H	
May. 3	F.A. Cup Final		

FOR THE RECORD

27th AUGUST. FOOTBALL COMBINATION.

SWINDON TWN 0 BRISTOL ROVERS 1

Berry, Tanner, Butler, Young, Gill, Munks, Styles, Jenkins, Burrows, Farr, McGovern
S - Algar.

31st AUGUST. DIVISION III

SWINDON TWN 2 (Eastoe, Dixon)

Barron, McLaughlin, Trollope, Hubbard, Potter, Moss, Eastoe, McLean, Jenkins, Dixon, Butler,
S - Syrett

BLACKBURN ROVERS 0

Jones, Wilkinson, Heaton, Metcalfe, Hawkins, Waddington, Beamish, Oates, Martin, Parkes, Hilton, S - Endean.

FOOTBALL COMBINATION

ARSENAL 1 SWINDON TWN 0

Berry, Chalklin, Tanner, Gill, Burrows, Young, Farr, Munks, Thompson, Algar, McGovern
S - Brinkworth.

2nd SEPTEMBER. MIDLAND YOUTH.

OXFORD UNITED 5 SWINDON TWN 1 (Farr)

Hayduck, Goodwin, Cowley, Tanner, Thompson, Sloman, Way, Algar, Farr, Brinkworth, Gilligan J. S - Gilligan A.

3rd SEPTEMBER. DIVISION III

SWINDON TWN 0

Barron, McLaughlin, Trollope, Hubbard, Potter, Butler, Moss, Dixon, Eastoe, MacLean, Jenkins,
S - Prophett.

TRANMERE ROVERS 0

Johnson, Mathias, Flood, Veitch, Moore, Palios, Coppell, Allen, Mitchell, Crossley, Young,
S - Webb.

APPEARANCES

	League Appearances	Gls.	League Cup Appearances
J. Barron	5		1
W. Dixon	3 (1 sub)	1	1
J. McLaughlin	5		1
N.J. Trollope	5		1
D. Munks	2		1
R. Potter	5		1
P. Eastoe	5	3	1
T. Hubbard	5		1
T. Jenkins	4		1
D. Moss	5	1	1
D. Syrett	3 (1 sub)		
H. McLean	5	1	1
F. Burrows	(2 sub)		(1 sub)
J. Butler	3		
C. Prophett	1 (1 sub)		

DIVISION 3

Table of Results to Wednesday, 11th September 1974 (Not inclusive)

Southend	5	3	0	0	8	2	1	1	0	1	0	9
Preston	5	3	0	0	7	2	1	0	1	4	4	8
Charlton	4	2	0	0	3	0	1	1	0	3	2	7
Peterboro	4	2	0	0	4	1	1	0	1	2	3	6
Blackburn	4	2	0	0	4	2	1	0	1	2	3	6
Watford	5	1	1	0	5	4	1	1	1	3	4	6
Bournemouth	4	1	1	0	2	0	1	0	1	1	1	5
Halifax	5	1	1	0	5	3	0	2	1	3	7	5
Crystal Pal.	4	2	0	0	8	3	0	0	2	1	4	4
Walsall	4	1	1	0	4	2	0	1	1	4	5	4
Plymouth	5	2	0	0	6	2	0	0	3	4	7	4
Colchester	4	1	1	0	2	1	0	1	1	3	4	4
Hereford	5	2	0	1	4	1	0	0	2	1	5	4
Brighton	4	2	0	0	3	1	0	0	2	0	3	4
Port Vale	4	1	1	0	4	3	0	1	1	2	5	4
Swindon	5	1	1	1	2	2	0	1	1	4	8	4
Grimsby	4	1	0	1	4	2	0	1	1	2	3	3
Aldershot	5	2	0	1	6	5	0	0	2	0	4	3
Chesterfield	4	1	1	0	4	2	0	0	2	2	4	3
Wrexham	4	1	1	0	5	3	0	0	2	2	5	3
Tranmere	5	1	0	1	2	1	0	1	2	2	6	3
Bury	5	0	1	1	1	2	1	0	2	3	6	3
Huddersfield	4	1	0	1	4	3	0	0	2	0	2	2
Gillingham	4	0	1	1	2	3	0	0	2	1	4	1

Aldershot: One point deducted for playing ineligible player.

FOOTBALL COMBINATION LEAGUE

	Goals											
	P	W	D	L	F	A	P					
Ipswich Town	6	6	0	0	21	5	12					
Chelsea	7	6	0	1	15	5	12					
Norwich City	7	4	2	1	15	6	10					
Cardiff City	6	5	0	1	17	7	10					
Luton Town	7	4	1	2	14	8	9					
Bristol Rovers	5	4	0	1	6	4	8					
Leicester City	7	3	2	2	7	6	8					
Tottenham Hotspur	7	3	2	2	8	10	8					
Oxford United	7	3	1	3	12	9	7					
Arsenal	7	3	1	3	6	5	7					
Southampton	7	3	1	3	15	14	7					
Queens Park Rangers	7	3	1	3	11	11	7					
Bristol City	6	3	0	3	13	10	6					
Crystal Palace	6	2	1	3	10	12	5					
Birmingham City	7	1	3	3	4	7	5					
A.F.C. Bournemouth	6	2	0	4	5	12	4					
Plymouth Argyle	3	1	1	1	5	5	3					
Fulham	7	0	3	4	6	14	3					
Swansea City	4	0	2	2	4	6	2					
West Ham United	6	0	1	5	5	12	1					
Reading	4	0	0	4	3	20	0					
Swindon Town	5	0	0	5	0	14	0					

HOME ATTENDANCES

Opponents	Attendance	League Average
Bury	6441	6441
Portsmouth (L.Cup)	4779	-
Blackburn Rovers	4951	5696
Tranmere Rovers	5511	5634
Plymouth Argyle		
Aldershot		
Watford		

HOME MIDLAND YOUTH FIXTURES

17th September
v Notts County
(K.O. 2.30 p.m. Shrivenham
Rd Ground)

2nd October
v Nottingham Forest

23rd October
v Bristol City

6th November
v Wolverhampton Wanderers

27th November
v Northampton Town

29th January 1975
v Aston Villa

12th February
v West Bromwich Albion

19th February
v Leicester City

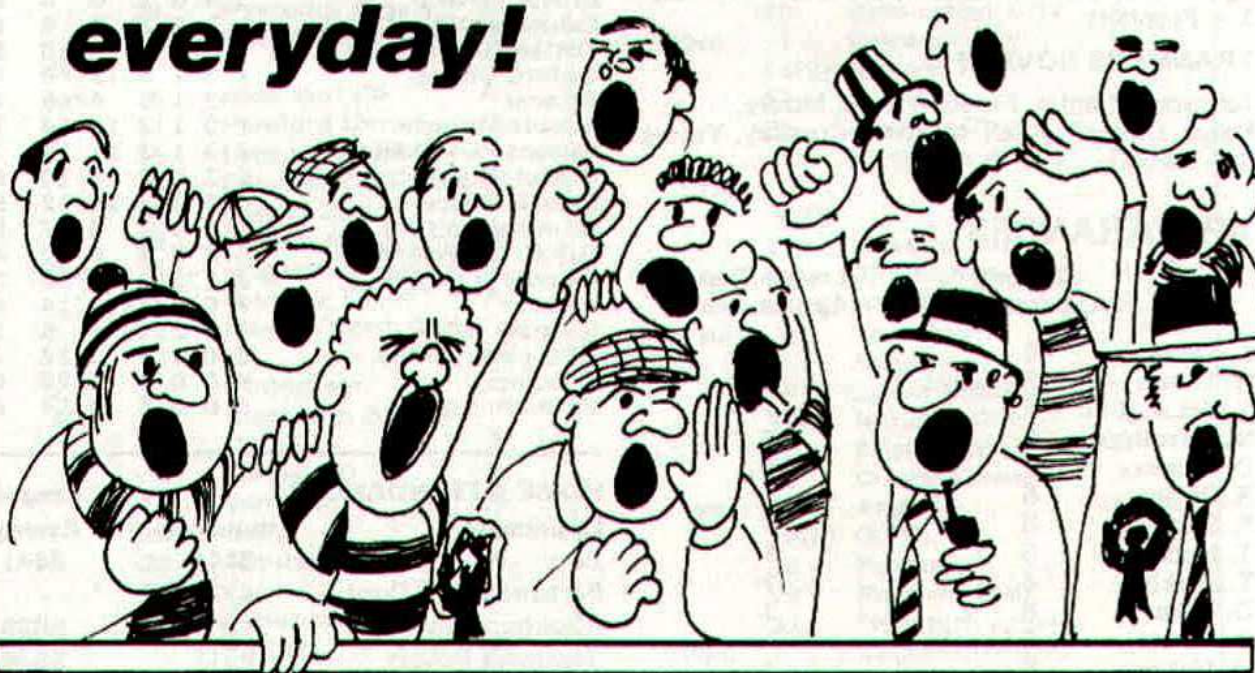
TUES NEXT

Division Three

SWINDON TOWN V ALDERSHOT

KICK OFF
7.30

Gaining more new fans everyday!



The Evening Advertiser

Block Booking of Seats for Local Companies

Bring your company's clients and visitors along to watch matches at the County Ground - it's a novel and well-received way of entertaining them.

Several local companies have made block bookings of seats so that they are available to them at any time.

Why not consider it for your company? Our Secretary, Bob Jefferies, will give you all the information you require and agree on the costs.

Ring him on Swindon 22118 or write to the County Ground, Swindon.

It is with regret that we have to inform you of the death of Mrs. Staddan, affectionately known to supporters as "Aunty Flo". Following an illness she passed away at Princess Margaret Hospital on Saturday, September 7th aged 93.

She was a founder member of the Supporters' Club and supported the Club to the end. She was still selling programmes when in her eighties and no doubt will be remembered by many for this and her many other activities.

We would like to offer our condolences to the family and relatives of Mrs. Staddan. A grand old lady, she will be sorely missed at the County Ground.

MATCH BALL

donated by

GRAHAM DREW

S.T.F.C.
Commercial Manager

Previous donors:-

Borough News, Elgin Drive, Swindon.
Howard & Sons, Manor Farm, Marston, Devizes.
C. J. Green, 12 Armstrong St, Swindon.
W. Collins, 69 Commercial Rd, Swindon.



CASTLE'S

Office and Bakery

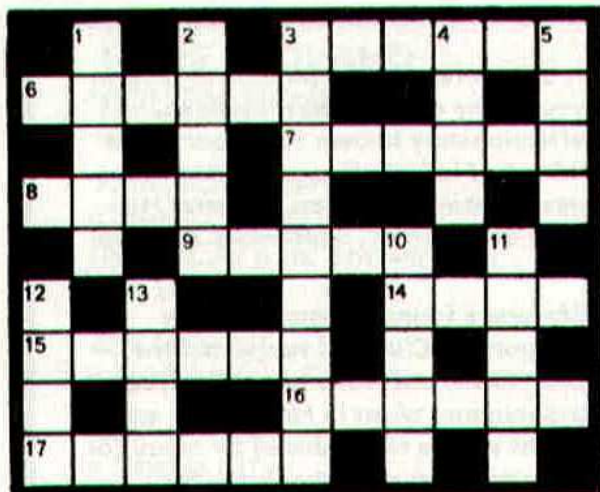
4 and 5 MARKET STREET SWINDON

Telephone 22017

Specialists—

Birthday Cakes : Wedding Cakes
Dairy Cream : Pastries : Crusty
Bread : Buns : Rolls : Sponges





CROSSWORD PUZZLE

compiled by Gordon Kaye

The first four correct entries opened by The Secretary, The Swindon Town F.C. County Ground, Swindon will each receive two tickets to a home Football League match. Please mark your envelope "Ninety-Niner"

CLUES - Across

3. Den defender (6)
6. Ipswich ex-Birmingham keeper (6)
7. Cambridge or Colchester (6)
8. Sunderland schemer (4)
9. Last country to be eliminated before the World Cup finals (5)
14. Carlisle striker (4)
15. See 12 down
16. --- Sandberg (Kaiserslautern & Sweden) (6)
17. Ex-Oxford keeper at Walsall (6)

CLUES - Down

1. Newport striker (5)
2. What successful Tottenham players are awarded perhaps? (5)
3. Irish League side (9)
4. Field Mill full-back (4)
5. Norman Burtenshaw wrote a book called "Whose --- Are You On, Ref?" (4)
10. Once Swindon schemer, now Burnley back (5)
11. --- Dalglish (Celtic & Scotland) (5)
12. & 15 across. League side until 1970: Bradford --- --- (4,6)
13. Famous coach, successful with several continental clubs: --- Guttman (4)

CROSSWORD SOLUTION - PORTSMOUTH PROGRAMME.

SOLUTIONS - Across

1. Graham, 4. Clay, 8. Melia, 9. Roger
10. Cambridge, 14. O'Neil (So'ton),
16. Crewe (Alexandra), 17. Home, 18. Keenor.

SOLUTIONS - Down

1. Game, 2. Alloa (Athletic), 3. Alan Ball,
5. leg, 6. York, 7. Kreische, 11. green,
12. Posh (Peterboro'), 13. Fear (B. City v Leeds), 15. Elm (Park).

Copyright Margana

RIMES OF SWINDON

INTERNATIONAL TRAVEL AGENTS

LUXURY COACH HIRE

Saturday, 21st Sept.	CHARLTON	Dp. 11 a.m.	adult £1.30	child 90p
Tuesday, 24th Sept.	WALSALL	Dp. 4 p.m.	£1.25	85p

SERVICE DIRECT TO THE GROUND
ALL SEATS NUMBERED AND RESERVED

Book now at
102 Commercial Road,
Swindon
Telephone 27113

or

46 Cricklade St.,
Cirencester.
Telephone 3479

or any Rimes Booking Agents

GOOD AFTERNOON SUPPORTERS

First of all I would like to welcome Plymouth Argyle to the County Ground this afternoon, it is so good to see so many of my old friends from the South West again. They bring reminders of happy but hard-working times spent at Plymouth.

In our endeavour to become identified with Swindon and its surrounding areas our Match-day Competition is geared in such a way that any unclaimed prize money can be used for the benefit of local charities. I think it is of the utmost importance that the public realise that we as a club, want to belong and to be part of everyday life in the area, our support and our very existence relies on your attitude to us and we in turn pledge to do our very best to warrant your respect and support. There are times of course when your criticisms and opinions do not favour us and some cases we deserve your candour, but I like to think these times are in the minority and that Swindon Town's future will be even greater than its past. We live in a town that has a great future, a town with an expansion programme that is almost unbelievable and we as its football club want to expand and grow in stature with it.

It was very difficult indeed to decide which charity to help first but as luck would have it one of our pools agents informed me of the plight of the blind, and in particular Westlecot Home for the Blind in Swindon. Without further ado I rang the matron to find out how we could help and after a lengthy discussion we settled on a method of entertainment which for the residents of Westlecot seemed to be the answer, a stereo Record Player which was presented to them on Friday evening, 30th August. Upon arrival at the Home we were met with great enthusiasm by the residents in their large lounge. It was certainly a most moving scene and a most rewarding one, rewarding to see the faces of these dear

old people when we played some of the records we provided with the stereo. I think if we can add a few pleasurable moments to these peoples' lives then we have done a good thing in furthering our relationship with the people of Swindon.

In these times when in the press we see so many bad things written about football and its supporters how good it is to know that we can do the right thing on certain occasions. May I hasten to add that as far as rowdyism is concerned, at Swindon there is hardly any, this is due in no small measure to the excellent organisation of the police in and around the ground on match days, the way in which they handle any difficulties that arise is a credit to them.

AN INNOVATION

We felt that so many people have been disappointed with their holidays this year what with the weather and the problems of certain travel companies, we decided it would be a good idea if we could help them to have a happy holiday in the future. As you probably know the Pontins organisation have always been very good friends of us in the football world and its supporters and our commercial department can now help you to book through them and this guarantees a first class holiday at any one of their numerous venues. Brochures and further information can be obtained from the commercial office so help us to help you to have a wonderful relaxing holiday. It is certainly a must for any family. I can just hear some of you saying "but I can't afford a holiday", well all I can say is you haven't found out how much it costs. I think you will be pleasantly surprised when you see the prices.

Yours in Sport
GRAHAM DREW
Commercial Manager.

TOWN SOUVENIRS

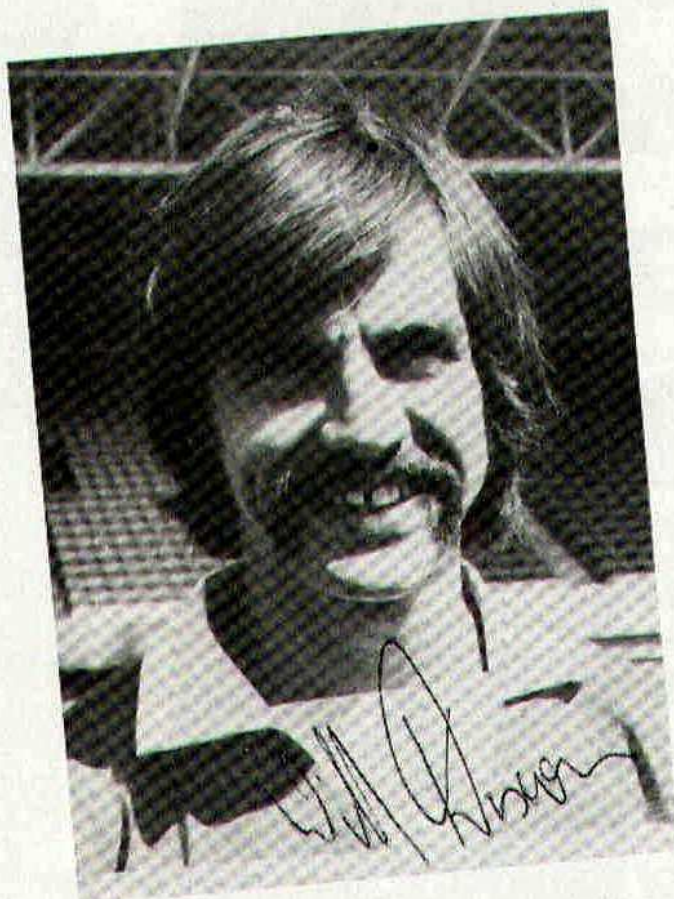


PRICE LIST

Swindon Town Papermate Pens	66p	Scarves Knitted(Red & White)	£1.15p
Swindon Town Ball Point Pens	6p	Boots Football (Miniature)	44p
Satin Scarves in Club colours	73p	Pencils	6p
Rosettes	14p	Rainhoods	6p
Lapel Badges	30p	Bracelets - large	27p
Satin Pennants	22p	Bracelets - small	25p
PVC Pennants	16p	Pendants	25p
Shirt badges	13p	Autograph Books	27p
Philatelic League Cup Covers	25p	Fibre Tip Pens	5p
1969 League Cup Final programmes	5p	Combs	5p
1969 League Cup Ties	25p	Sew on Patches	30p
Selection of programmes		Car Sticker Badges(Self Adhesive)	16p
New Club Ties	£1.05p	Chrome Pendants (First Division)	33p
Players' photographs	15p	Iron-ons	15p
Knitted bobble hats	45p	Button Badges	5p
Kopper Jackets	£1.93p	First Division Fringed Pennants	23p
Shoulder bags	£1.38p	F.A. Diaries	45p
Duffle bags	£1.05p		

WE ARE PLEASED TO ACCEPT ORDERS BY POST.

profile on WILL DIXON

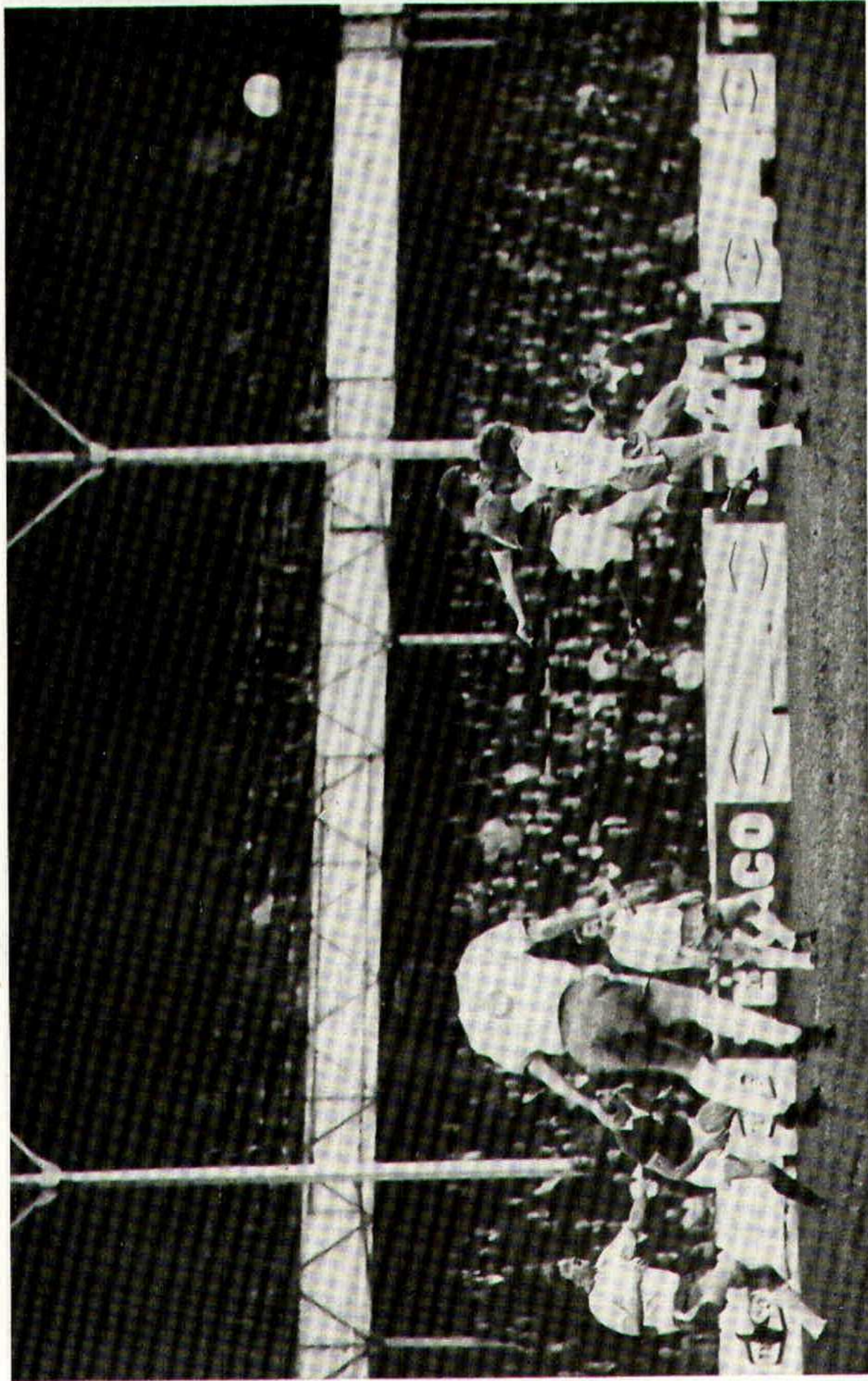


Will was born in Barnet in London and joined Arsenal from school, and signed professional with that Club at the age of 18. Joined Reading in 1969 and remained with them until the end of Season 1972-73. After a short trial period at Colchester, during which time he was injured, and further signings were made, he joined Swindon in September, 1973.

Will lives with his wife Lin in Tilehurst, Reading, and they have two children, Mark age 3½ years and Sue who is just 12 weeks old. They also have a dog called Dandy. Will is very interested in all motor sports, and his taste in music ranges from the classics to pop.

Football League record:

		Aps.	Gls.
ARSENAL		No League	
READING	1969/70	43	-
	1970/71	42	-
	1971/72	36 (2)	-
	1972/73	29 (1)	-
COLCHESTER	1973/73	-	-
SWINDON	"	17	-
		167 (3)	-

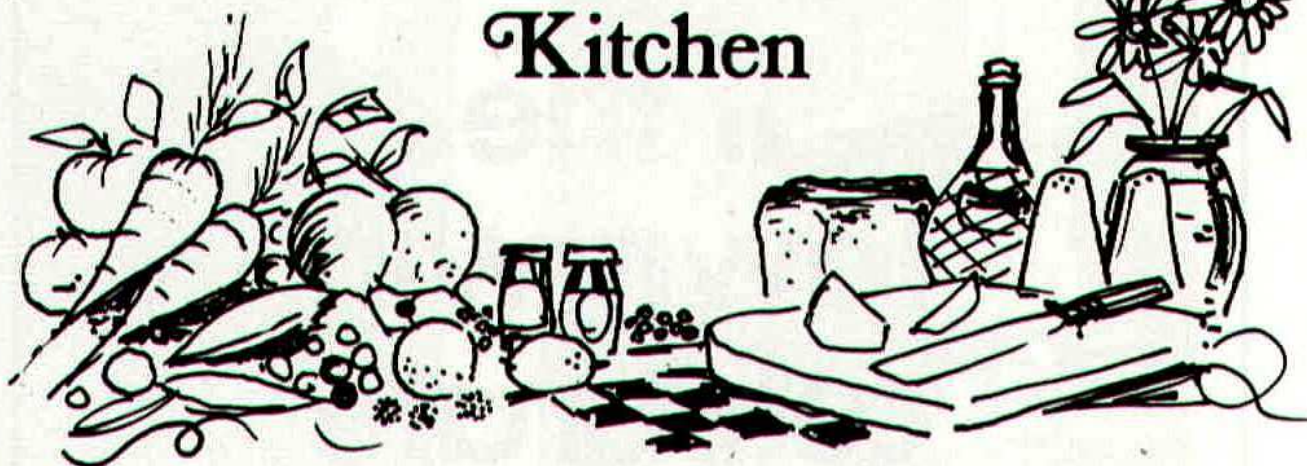


Action - from last Saturday's game

**If the
Town win,
celebrate
with a pint
of Arkells.
If they lose,
drown your
sorrows
in it.**

ARKELLS 

In the Garden and Kitchen



CHRYSANTHEMUMS

Outdoor varieties of all types will be in full flower this month. Select the best for next year's stock and label them clearly as such.

Flowers for cutting

Allow flowers for cutting to become well developed on the plants first. Greaseproof bags are sometimes used to protect the blooms. In this case, dust the insides of the bags lightly with BHC powder to deter ants, earwigs and aphids, which also enjoy this shelter. Special woven nylon net protectors are also made for this purpose. When cut, stand the blooms in 10 - 12 in. of water in a cool place before arranging them, first stripping the stems of all leaves for the lower foot or so.

UNDER GLASS

Bring pot-grown varieties into the greenhouse before the middle of the month. Carry large plants into the greenhouse pot end first, to lessen risk of damage.

Prepare a level floor on which to stand the pots, and clean the glass so that the plants get as much light as possible. Clean the pots, remove all dead or damaged leaves, and give the plants a thorough spraying with a combined insecticide and fungicide. Water the pots the day before bringing them in and make sure that each pot stands firm and level, allowing at least 12 in. between them.

Ventilation

Keep the ventilators and, if possible, the doors open day and night for the first week or ten days. Keep the floor clean and dry and do not heat the greenhouse.

Continue to disbud the late varieties, and keep a sharp watch for aphids, spraying as necessary.

Plants will still benefit from applications of weak fertiliser until the buds show colour. Discontinue at this stage.

Plants growing in the greenhouse borders need a night temperature of 13°C (55°F) while the buds are forming towards the end of the month.

TEA-TIME CAKE

8 ozs S.R. flour
4 ozs. Margarine
4 ozs. Caster or Granulated sugar
6 ozs. Mixed Fruit
1 Egg
5 tablespoons milk
Small quantity of sugar
(Regulo 4 - 360°F)
6" Cake Tin

METHOD

Sieve the flour into a mixing bowl and add the margarine, cut into small squares and rub into the flour with finger tips. Stir the caster (or granulated) sugar into the rubbed in mixture with a metal spoon. Add the fruit and stir. Beat the egg lightly with the milk and add to the mixture and stir thoroughly together. Turn into a prepared cake tin and smooth the top. Sprinkle brown sugar over the top and bake for 1¼ - 1½ hours.

Do you require

Tracked or Wheeled Excavators

Tracked or Wheeled Shovels

Tractors and Scrapers

Bulldozers

Tipper Lorries

Low Loaders

Then HIRE from

H Hibberd Ltd

PLANT HIRE CONTRACTORS

29 Newport Street, Swindon

Tel: Swindon 6125 or 23876

SWINDON TOWN v PLYMOUTH ARGYLE

Saturday, September 14th, 1974 - Kick-off 3 p.m.

SWINDON TOWN

- 1 Barron
- 2 McLaughlin
- 3 Trollope
- 4 Hubbard
- 5 Potter
- 6 Prophett
- 7 Moss
- 8 Syrett
- 9 Eastoe
- 10 Butler
- 11 McLean
- 12 Burrows

Division
Three

PLYMOUTH ARGYLE

- 1 Furnell
- 2 Darke
- 3 P. Burrows
- 4 Marnier
- 5 Griffiths
- 6 Green
- 7 Delve
- 8 Hardcastle
- 9 Davy
- 10 Rafferty
- 11 H. Burrows
- 12 Hore

Referee: Mr. A. Porter (Bolton)

Red Flag: Mr. J.J. Faulkner (Didcot)

Yellow Flag: Mr. V.H. Wood (Northampton)

The Texaco logo, consisting of the word "TEXACO" in bold, black, sans-serif capital letters, enclosed within a red-bordered hexagon.

offer their best wishes to
Swindon Town
for a happy and successful
1974/1975 season